

SETTING NEW
STANDARDS



HYPER
GRINDER

HRC
550
DCT 



MADE IN ITALY



PROFESSIONAL TECHNOLOGICAL GRINDER

The DCT system allows you to choose to smooth use only using the rotation of the tools (DCT ON mode), or with the classic complete rotation of the planetary (DCT OFF mode).

MAIN CHARACTERISTICS:

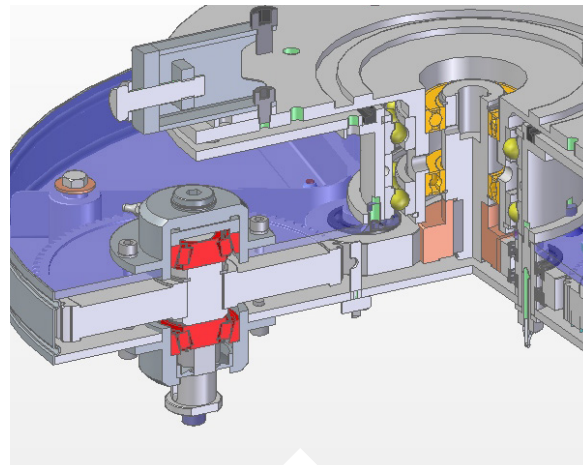
- Single-shell chassis, robust and compact for less space.
- 180 ° overturning system for extra weight. The displaced weights increase the grinding pressure. The weights moved back facilitate the tilting operation for tool changes. (Optional)
- 46 litre water tank.
- Powerful front and rear LED spotlights (optional).
- Total transmission with heat treated gears for maximum reliability and durability.
- Noise reduction levitating planetarium.
- 2 Year Warranty: The GUARANTEE for machines equipped with “hour counter” is up to 2 years or 600 hours of work.

TECHNICAL DATA

Model	Motor	Drive Inverter	Volt	Hertz	Amp	Tool Speed rpm	Work Diameter	Tool Size	Water Tank	Size LxAxP cm	Weight
HRC 550	2900 Watt Max	-	220	50	--	800	550mm	3x200mm	46 lt	120x125x57	-- Kg
HRC 550 VS	3000 Watt Max	4 kW mono	220	50/60	--	400-1000	550mm	3x200mm	46 lt	120x125x57	210 Kg
HRC 550 T5 VS	5,5 HP	4 kW 3Phase	380-480	50/60	16	600-1000	550mm	3x200mm	46 lt	120x125x57	-- Kg



Professional grinder with exclusive **double rotation system** "Dual Cut Tech".



FULL METAL GEAR BOX WITH HELICAL GEARS. PLANETARY HEAD that is 100% tempered metal and geared driven not belt.



Drive lever system. **DCT.**

ESTIMATED PRODUCTION

Concrete Polishing 7 step	8-12 m ² /h
Concrete Grinding 1 step	35-70 m ² /h
Terrazzo Polishing 5 step	8-12 m ² /h
Resin Removal 1 step	35-70 m ² /h
Paint Removal 1 step	35-70 m ² /h
Marble Polishing 5 step	6-10 m ² /h
Granite Polishing 7 step	5-6 m ² /h

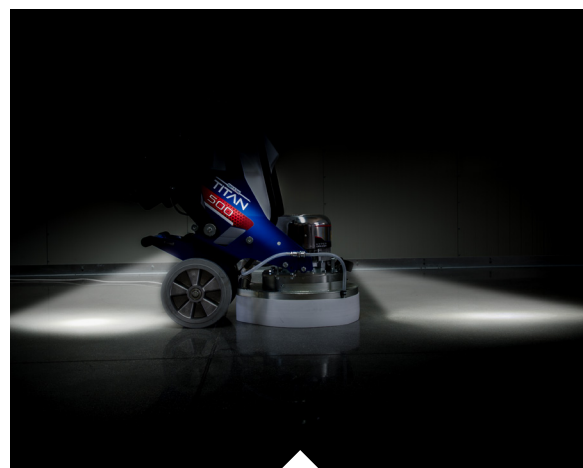
Data may vary depending on surface conditions, tools used, operator convenience, equipment, etc.



Volume
0,72 m³

Size
63x123x140cm

Weight
225 Kg



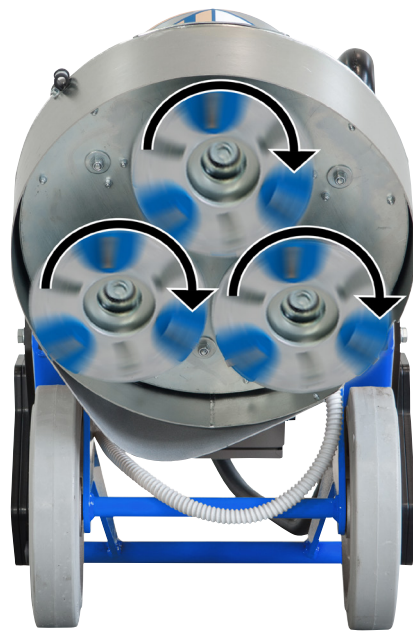
POWERFUL FRONT AND REAR LED (OPTIONAL)

DOUBLE CUT TECH

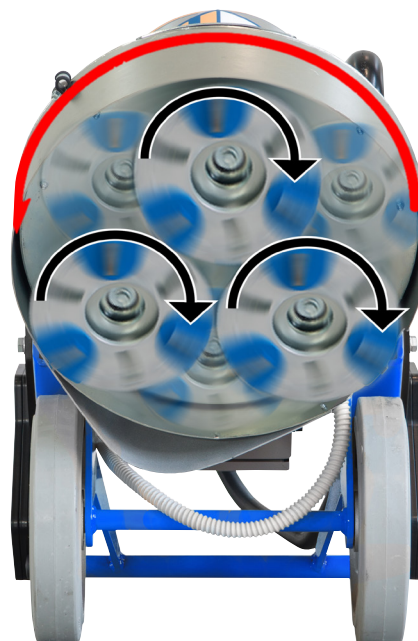
The new range of HRC grinders introduces the exclusive DCT transmission. Thanks to this innovative function, it is possible to lock the rotation of the main plate and allow only the rotation of the tools simply by pressing a lever on the planetary (DCT ON). With the DCT in the ON position you gain higher speeds of the satellites for a more aggressive and effective grinding. The DCT ON system is ideal for glue and resin removal work, surface preparation and floor levelling. Turning off the DCT (DCT OFF) lever will cause the main plate to rotate in the direction of the tools. In DCT OFF mode the planetarium is counter-rotating for general polishing, marble polishing, natural stone and concrete.

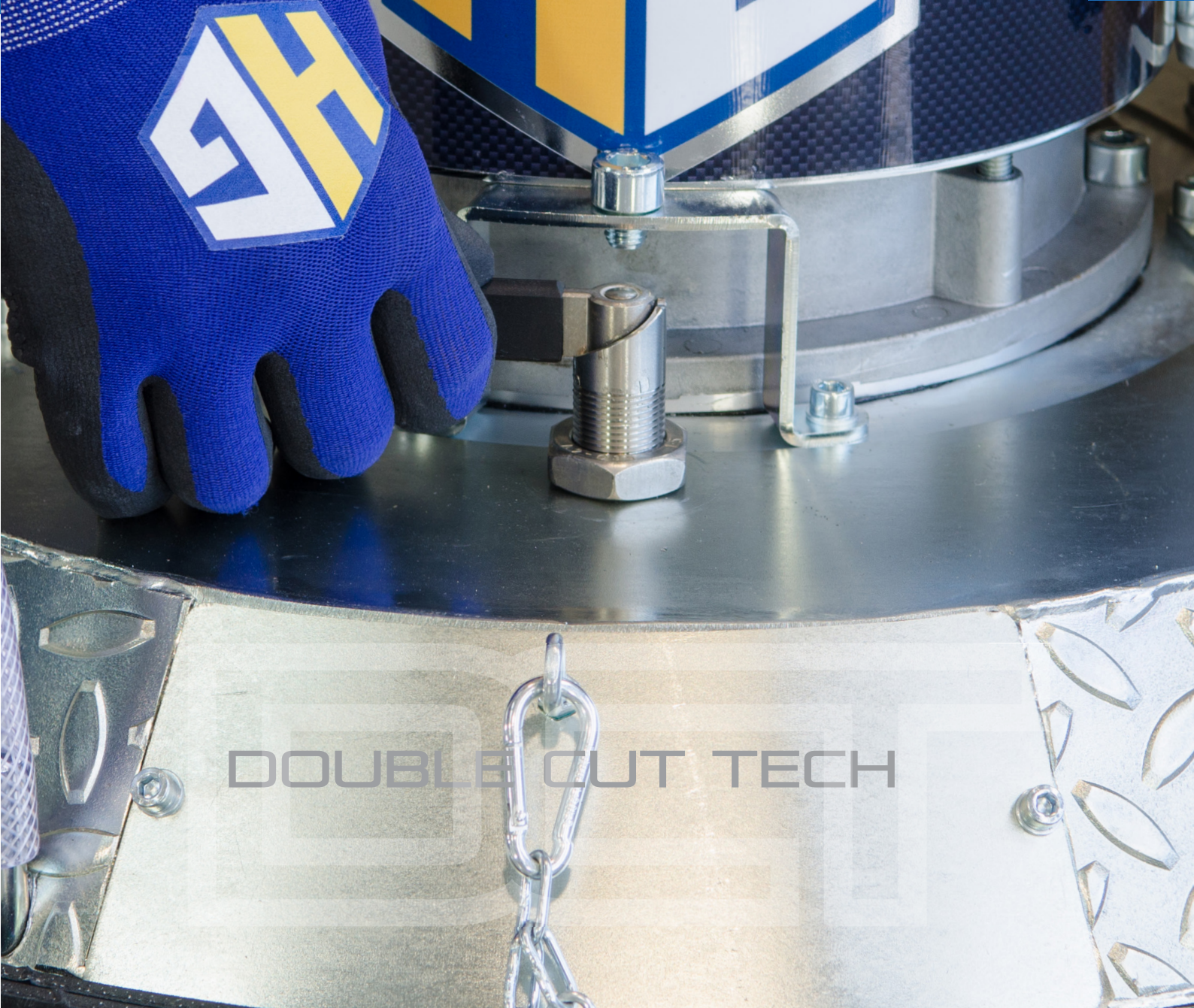


DCT ON: Only allows rotation of the tool holder satellites, this option makes HRC extremely effective and aggressive for the preparation, removal of glues and resins, for leveling the surface and for rapid exposure of the concrete aggregate.

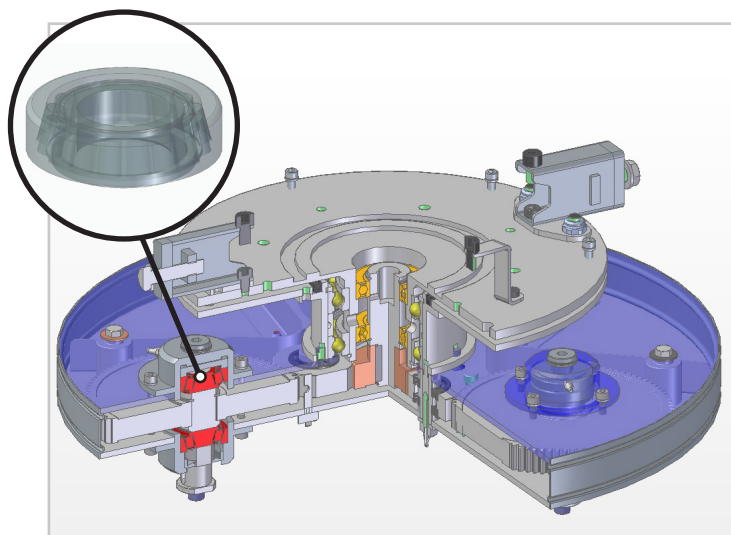


DCT OFF: Allows rotation of the planetary in counter-rotating mode, ideal for sanding and polishing concrete, marble and natural stone floors.





PLANETARY HRC SERIES



The new planetary HRC series is now even more reliable and performing **thanks to the new helical and adjustable bearings** that offer greater resistance and precision even in heavy working conditions.

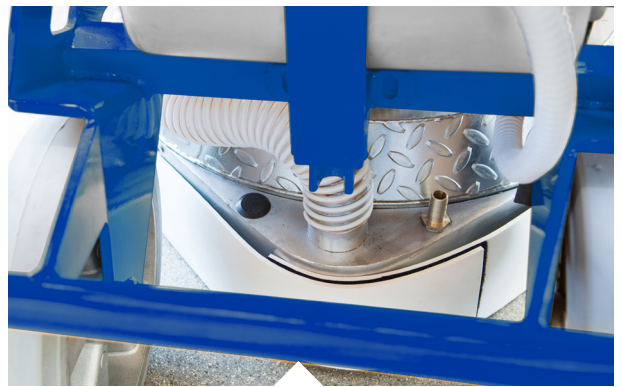
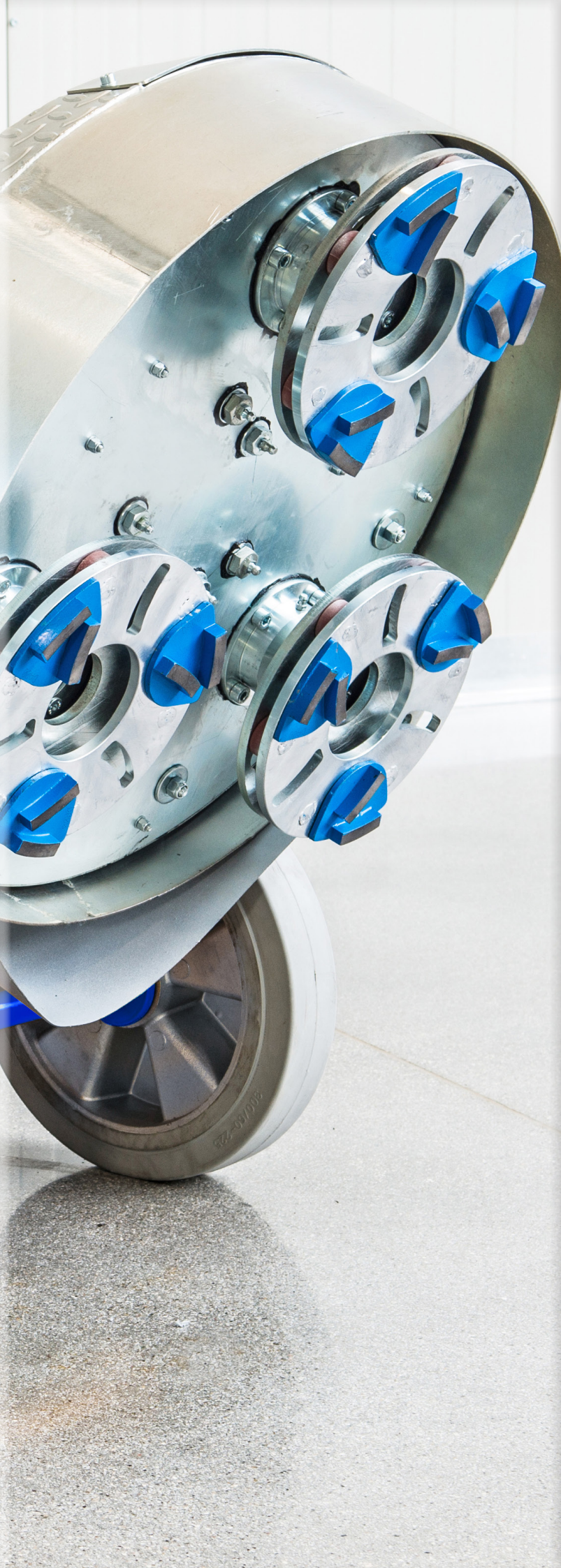
The practical adjustment system of bearings allows to adjust them without having to disassemble the entire planetary, but through the adjustment of a single screw.

Helical bearings are more rigid and resistant even under high load conditions and therefore less prone to deformation.

HRC floor grinders will be more stable, silent and performing thanks to the new HRC PLANETARY.

HRC 550





New Vacuum Hood



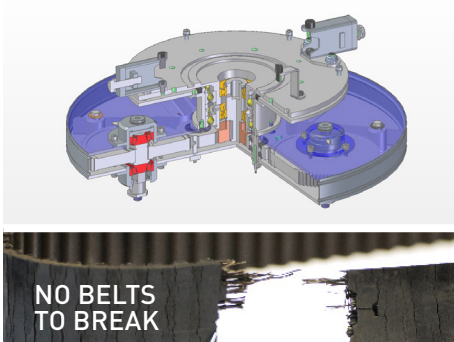
WHY CHOOSE HRC

SETTING NEW
STANDARDS



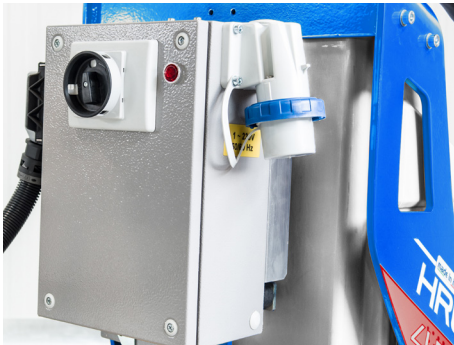
EUROPEAN CERTIFIED

The HRC series complies with safety standards Art. EN 60204-1



TRANSMISSION WITH TEMPERATED GEARS.

Planetarium in 100% tempered metal and without drive belt. The gear transmission system allows the machine to work continuously while maintaining high performance. No time wasted and pauses on the site construction due to broken belts. Belt drive planet gauges do not guarantee the same performance compared to planetary gearboxes, they are also subject to breakage during work and require long repair times. Warning: in many grinders the main dish and the satellites do not work together: if you lock a satellite the main dish keeps rotating, drastically reducing the performance of the machine.



SELECTOR TO LOCK THE INVERTER DOOR.

This device prevents opening the door before switching off the electrical panel.



SAFETY DEVICE DEDICATED TO MONITORING THE EMERGENCY CIRCUIT.

This device automatically switches off the machine in the event of a fault in the electrical system, preventing possible damage and repair costs. HG HYPER GRINDER uses the highest quality electrical components and complies with safety regulations.



ADJUSTABLE WEIGHTS.

180 ° overturning system for extra weight. The displaced weights increase the grinding pressure. The weights tilt back facilitating easy of use (optional).



EMERGENCY AND SAFETY BUTTON

The emergency button immediately stops the engine and all the “moving parts” (such as tools) avoiding any possible danger.



NEW DASHBOARD

HG Hyper Grinder introduces the new dashboard for the grinding machines. Cup holder and 2 USB sockets to make your job even more comfortable.



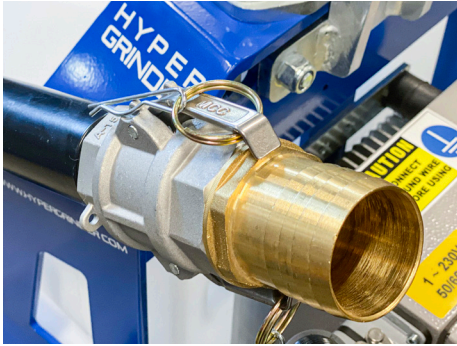
ADJUSTABLE HANDLE UP TO 90°

Handle in the rest position to reduce the clutter in the warehouse and in transport.



RAPID WATER CONNECTION

Convenient quick connection for connecting the water pipe directly. The tap allows you to adjust the water supply on the floor.



OPTIMIZED SUCTION SYSTEM.

Connection to the vacuum cleaner in order to work dry and without dust.



VARIABLE SPEED.

From 600 to 1300 rpm Many grinders on the market instead have a limited speed range.



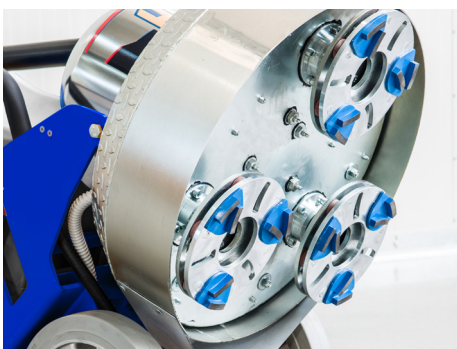
46 LITER WATER TANK.

The water tank is imperative during wet grinding. Many grinding machines on the market do not have a tank or have a smaller one.



EFFECTIVE WEIGHT DISTRIBUTION.

The HRC grinders are built with the engine positioned on the centre of the planetary thus ensuring a perfect balance and maximum working pressure in all conditions and surfaces including Marble, Terrazzo and Concrete. Many grinders on the market, on the other hand, are not suitable for polishing and polishing marble floors.



WE GIVE IMPORTANCE TO STEEL.

HRC sanders are designed to be very robust and reliable over time:

- Frame in treated and painted steel.
- Planetarium sump is made of almond metal and galvanized for and protects from shocks.

Many grinders have a plastic casing that is easy to break, do not protect the tools from impact and do not allow to work flush against the wall.



WATCH THE
VIDEO NOW



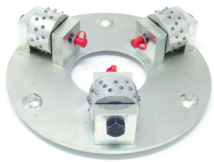
SCAN ME



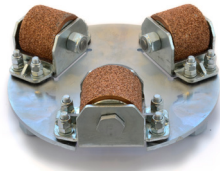
2 YEARS WARRANTY

The GUARANTEE for HRC grinder with "hour counter" is extended up to 2 years or 600 hours. To receive the extended warranty you will need to follow the maintenance schedule at an authorized HG HYPER GRINDER workshop. The first maintenance must be performed within a year or 500 hours of work.

HRC TOOLS



BUSH HAMMER exclusive tool useful for many applications.



SANDBLASTING sandblasting effect



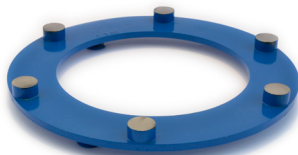
PDC SCRAPER for resin removal and thick coatings.



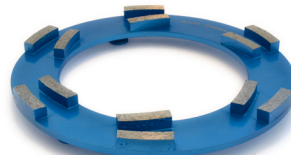
PDC HYPER SCRAPER for resin removal and thick coatings.



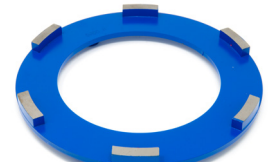
TCK ARROW for resin removal and paints on hard concrete floors



BT ROUND for the removal of lower thickness resins and paints.



TCK SERIES preparations and removal of coatings on concrete floors.



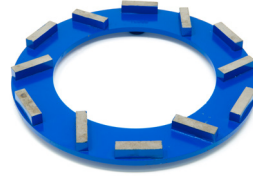
HG-M diamond tools for medium abrasive concrete.



HG-H diamond tools for grinding HARD floors.



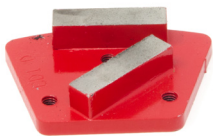
HG-S diamond tools for soft concrete.



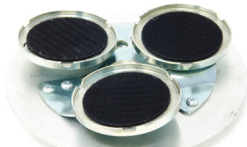
HG-A diamond tools for very abrasive and asphalt concrete.



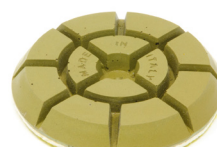
HG-P for standard concrete.



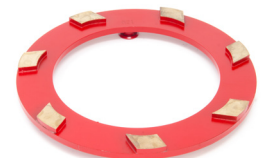
TRAPEZOIDS



SPRING HOLD SYSTEM for perfect and homogeneous concrete polishing.



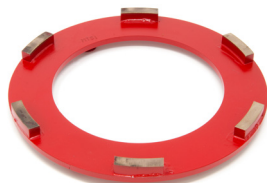
JUMPY GREEN for smoothing and polishing concrete floors.



SERIES MM metal diamond discs for polishing marble.



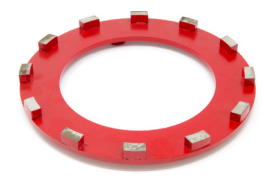
JUMPY YELLOW Resin disks for polishing marble floors.



SERIES MTM To smooth terrazzo, agglomerate, limestone, travertine and abrasive floors.



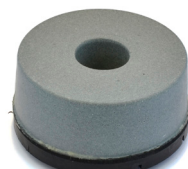
JUMPY ORANGE for polishing granite, Terrazzo, Limestone and Sawn.



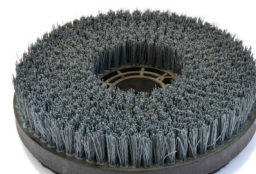
SERIES GM Metal diamond discs for smoothing granite and stoneware.



JUMPY RED Resin diamond disks for polishing granite and stoneware.



PAVELUX to remove mastic or polish marble and granite.



ANTIQUE BRUSH system for anti-queing marble, stone and terracotta.



TOOLS BOX Complete kit for grinding and polishing.



HG HYPER GRINDER S.R.L.
Via Ragazzi del '99, 7 | 65123 Pescara (PE) | ITALY
P.Iva 02223280682 | hypergrinder@pec.it | Tel +39 085 9218160
www.hypergrinder.com | info@hypergrinder.com



Your Distributor: _____



rev.24102024