

SETTING NEW  
STANDARDS



HYPER  
GRINDER

HG17  
KR GRINDER



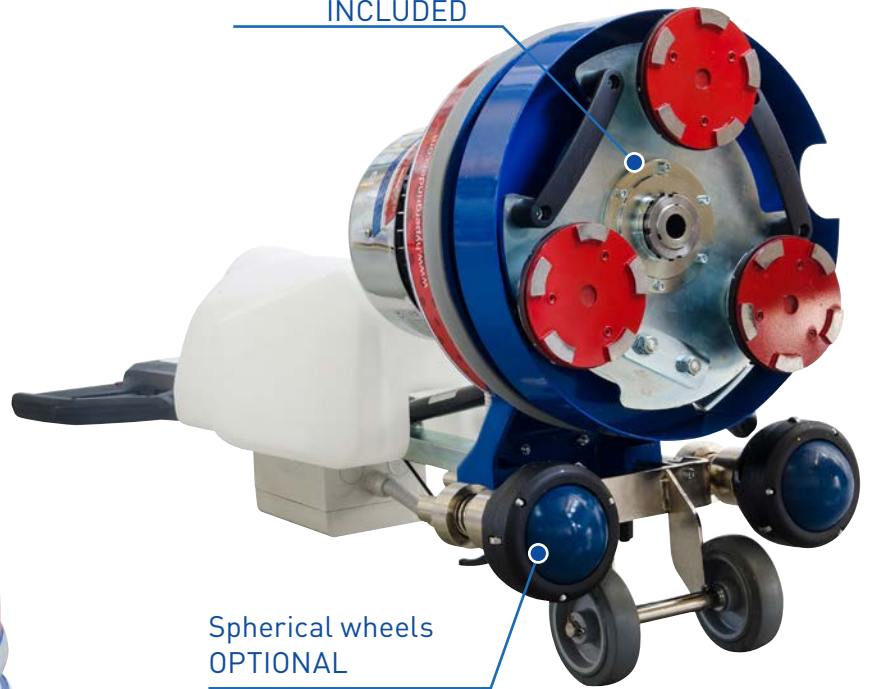
MADE IN ITALY

# HG17

## KR GRINDER



Planetary chain  
INCLUDED



Spherical wheels  
OPTIONAL

### HG 17 KR GRINDER

The most powerful single-phase floor machine on the market is now available with the innovative single-directional planetary with chain drive. Reliable, performing and extremely silent, it is ideal for all grinding operations in civil and industrial environments. Designed to achieve the lowest current draw and the best handling, the new chain planetary does not require any particular maintenance. Easy to use even for less experienced operators, its large standard adjustable wheels allow a perfect maneuverability as an alternative to swing.

The (optional) amortized directional wheels kit also allows to obtain floors with high flatness and an even higher finish effect. Ideal for all types of work on any surface from grinding to polishing marble, granite, stoneware, terrazzo, wood, concrete and industrial flooring up to preparation, removal of resins and glues and other types of treatments.

HG 17KR GRINDER is confirmed as the most versatile and reliable grinder, with low cost and superior performance.

\*The machine includes: 20lt tank, pad holder 430mm, HG1200 Planetary Chain, 3x140mm velcro tools holder

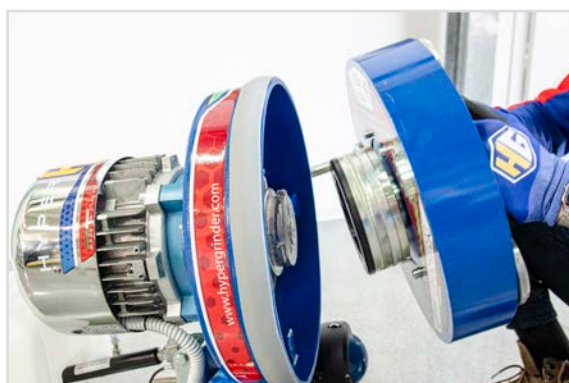
#### TECHNICAL DATA

Modell	Motor HP max	Volt	Hz	Motor speed rpm	Working width	Tools Dimension	Tank Liquids	Dimensions LxAxP cm	Weight Kg
HG 17 KR GRINDER	2,5 HP	220	50	150	450mm	3x140mm	20 lt	65x135x49	71
HG 17 KR GRINDER	4 HP	220	50	150	450mm	3x140mm	20 lt	65x135x49	88



# Professional single disc machine complete with new planetary Chain H1200

Planetary Chain  
Mono-directional.



Planetary with quick coupling



Ideal machine for grinding flush against walls.



STANDARD: Height-adjustable wheels.



Also ideal for dry processing



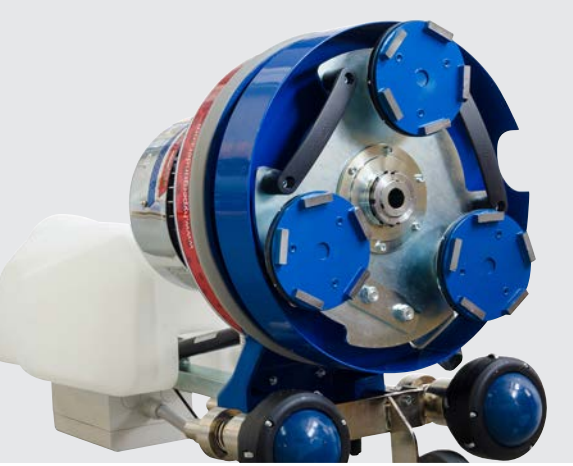
OPTIONAL: HG137301 Spherical wheel kit



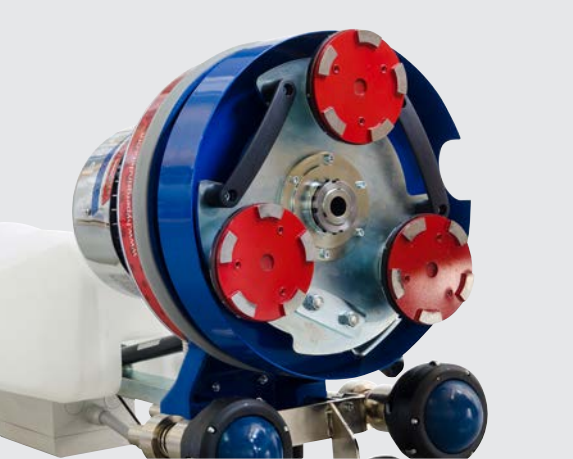
It also allows you to work on wooden floors

GRINDING AND POLISHING

CONCRETE



MARBLE, GRANITE AND STONE



TERRAZZO



CONCRETE AND STONE



BUSH HAMMERING

Versatile single disc and grinder machine, high performance and competitive price



FULL METAL GEAR BOX



HYPER GRINDER



# HG17

## KR GRINDER



**PLANETARY  
CHAIN**

**BRUSHES** for all surfaces



Floor restoration with **SPIRAL DIAMOND**



**RESIN AND GLOU REMOVAL**



**ANTIQUED EFFECT**





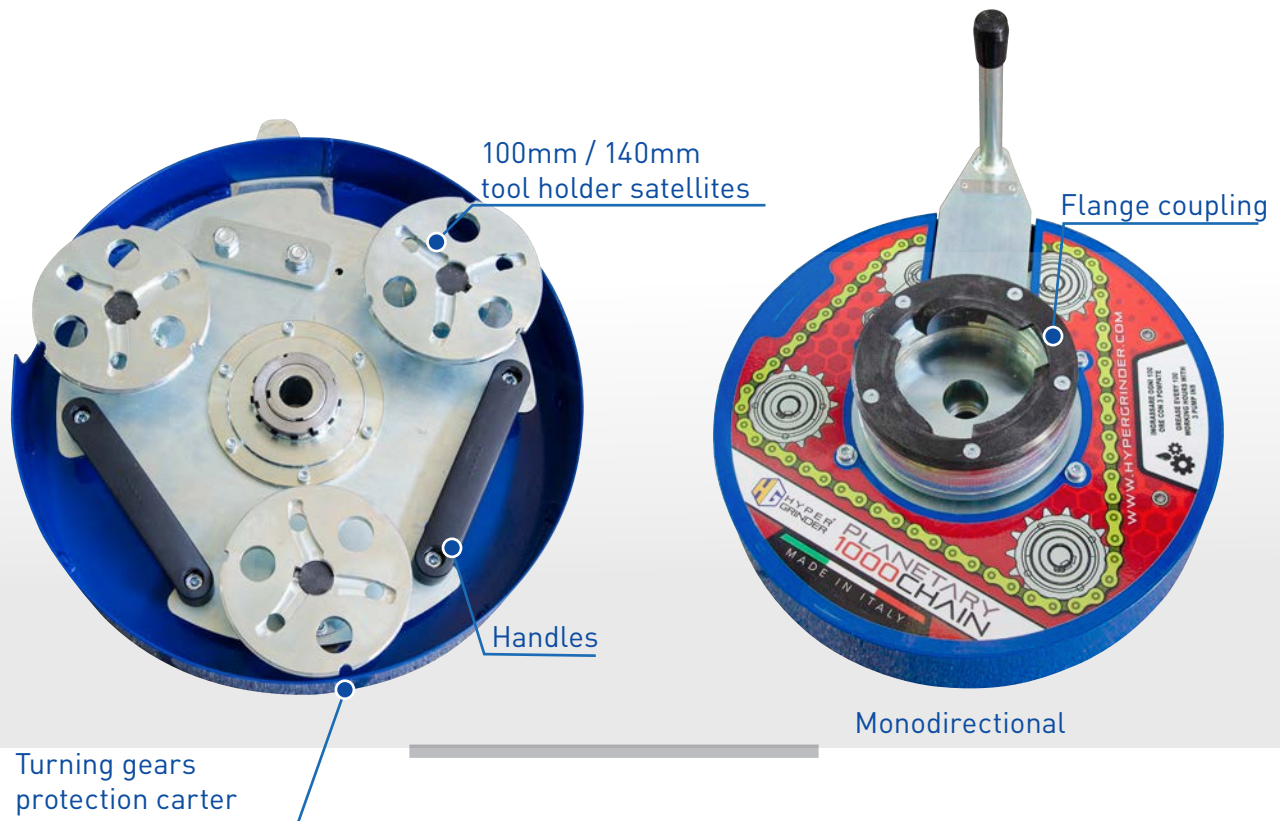
HYPER  
GRINDER



PLANETARY  
**HG** CHAIN



# PLANETARY HG CHAIN



**Compatible with any single brush machine  
of every model and every brand in the market**

## **TURN YOUR SINGLE BRUSH INTO A PERFORMING GRINDER.**

HG HYPER GRINDER, manufacturer of floor sanders, introduces the new chain driven planetary suitable for the single disc machines on the market.

Featuring 3 satellites 100 mm or 140 mm diameter, It allows quick and easy job for all applications. Using diamond tools, it is possible to grind and polish Marble, Granite, Cement, Cotto and terrazzo floors. Useful for surface preparation before laying coatings. Effective in removing old layers of resins and glues. The gear and chain transmission system multiplies the speed of the motor shaft of the single brush on the tool holder satellites ensuring a fast grinding without compromises.

The practical dust and splash guard made in anti-trace white finish material, protects the walls from bumps and dirt and can be connected directly to a vacuum cleaner.

# 1000 1200 CHAIN

## THE ULTIMATE SOLUTION

With the new HG CHAIN planetary you can remove, smooth, grind and polish in the fastest and most efficient way. WITH HG CHAIN **you can mount metal bonded, resin bonded or hybrid diamond tools, sandpaper, bush hammer, brushes and much more!**



## HG CHAIN PLANETARY



HG116501

Planetary HG1000C CHAIN

3x100mm AS

Planetary HG1200C CHAIN

3x140mm AS and QL

New mono-rotating planetary HG Chain with **chain transmission**. Planetary with **hardened steel gears** for maximum reliability and performance.

**TOOLS DIMENSION: 3x100mm AS**

**3x140mm AS and Quick Lock**



HYPER GRINDER



The flange couplings are interchangeable and compatible with any type of single-brush machine.



The chain transmission makes the new HG CHAIN planetary extremely silent, robust and reliable over time.



**Planetary chain**



**Spherical wheels**



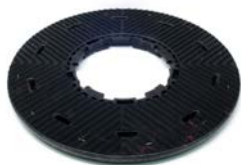
**Velcro pad holder**



**Antique Brush**



**Pad holder**



**Sandpaper holder**



**Moquette brush**



**Steel brush**



**Polishing brush**



**Standard brush**



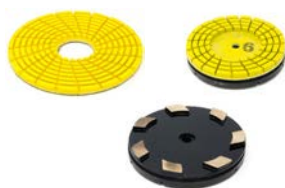
**Winnex brush**



**Carborundum**



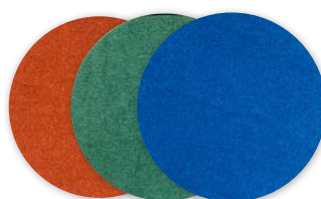
**Tools for marble**



**Tools for terrazzo**



**Tripad**



**Tytan Ring**



**Grouting disc**



**Hypershine soft**



**Hyperclean**



**Melamine pad**



**Parket diamond**



**Sand paper**



**Vacuum Kit**



**Spiral diamond pads**



**HG HYPER GRINDER S.R.L**  
Via Chieti, 6 | 65121 Pescara (PE) | ITALY  
P.lva 02223280682 | [hypergrinder@pec.it](mailto:hypergrinder@pec.it) | Tel +39 085 9218160  
[www.hypergrinder.com](http://www.hypergrinder.com) | [info@hypergrinder.com](mailto:info@hypergrinder.com)

Your Distributor: \_\_\_\_\_



rev.13032023



**HYPER GRINDER**